

LOGAN MUNICIPAL SCHOOLS

P.O. Box 67
Logan, New Mexico 88426
Phone: (575) 487-2252
Fax: (575) 487-9479

Food Surveys 2017-2018

Elementary Food Preferences

Breakfast: Pancake on a stick, breakfast pizza, cinnamon biscuit

Least Favorite: Eddy's Morning Rolls

Lunch: Hamburger/cheeseburger, pizza, chicken strips, tacos

Least Favorite: Pulled pork

Middle/High School Food Preferences

Breakfast: Pancake on a stick, breakfast pizza, pop tarts, uncrustable, biscuits (gravy/jelly)

Least Favorite: Hard boiled eggs

Lunch: Chicken strips, Hamburger/cheeseburger, tacos, chicken fajitas

Least Favorite: Oven roasted chicken

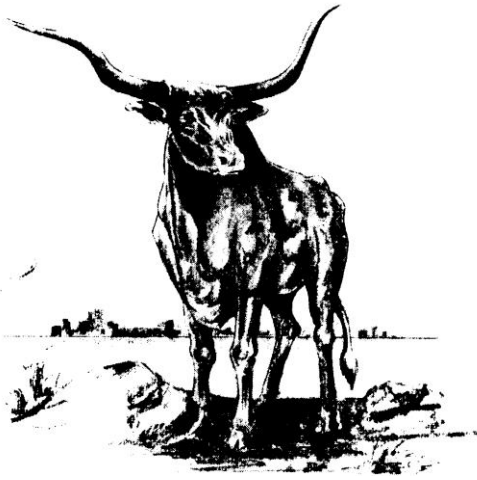
Overall School Food Preferences

Breakfast: Pancake on a stick, breakfast pizza, pop tarts

Least Favorite: Eddy's Morning Rolls

Lunch: Chicken strips, Hamburger/cheeseburger, tacos

Overall Least Favorite: Oven roasted chicken



LOGAN MUNICIPAL SCHOOLS

P.O. Box 67
Logan, New Mexico 88426
Phone: (575) 487-2252
Fax: (575) 487-9479

Student Transportation Survey 2017-2018

| | |
|--------------------------|-----------|
| Bus Riders: | 94 |
| Parent Drop Off: | 98 |
| Drive Themselves: | 37 |
| Walk/Ride Bike: | 18 |